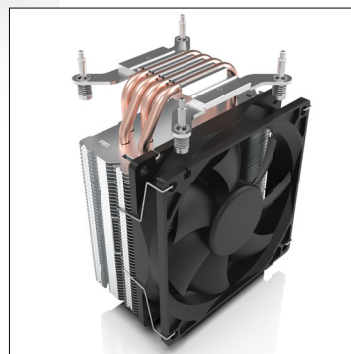
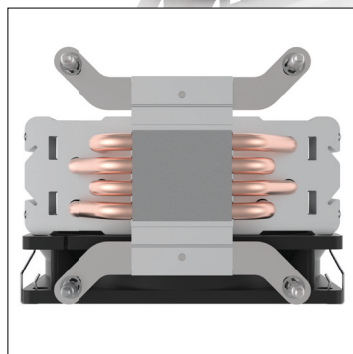
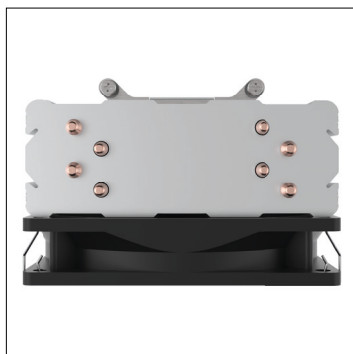
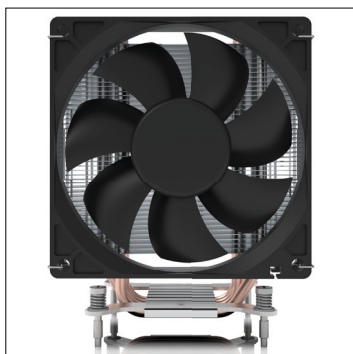


## EKL 22216

180/130<sup>1</sup>W TDP Premium Cooler  
for Intel<sup>®</sup> Socket LGA 17XX, 1200, 115X  
for AMD Socket LGA AM5, PGA AM4

- Powerful tower design
- Safe and stable screw mounting
- High performance thermal paste
- Powerful and low-vibration 120 mm PWM fan

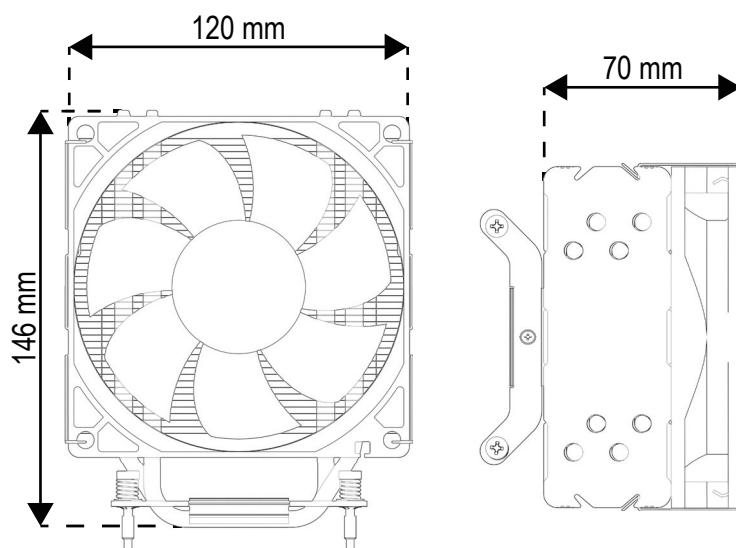


The EKL 22216 dissipates the heat of your processor ideally and reliably. Thanks to its height of 146 mm, the EKL 22216 is suitable for all high-performance systems and workstations. The screw mounting is designed for Intel<sup>®</sup> LGA 17XX, 1200 and 115X as well as AMD LGA AM5 and PGA AM4 sockets and is particularly easy and safe: Place the appropriate backplate, position the cooler, tighten 4 spring screws - done. The built-in fan has a 4-pin connection and can thus be controlled manually via the main-board. This enables an adjustable speed range of 600 - 1600 rpm.

### Specifications

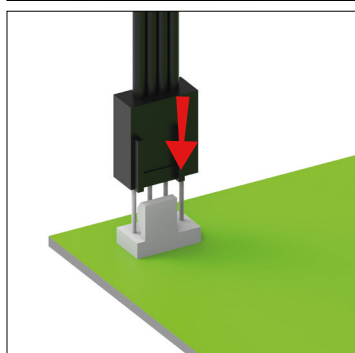
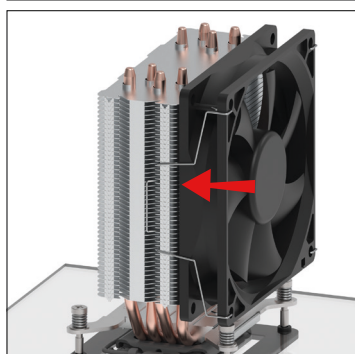
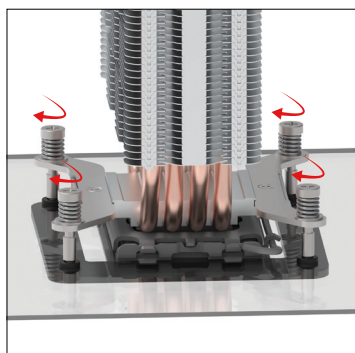
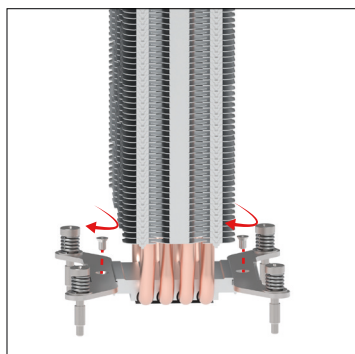
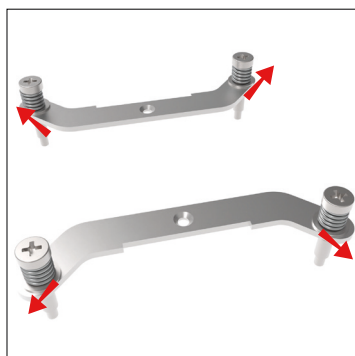
Part number (Retail)	22210021016
EAN (Retail)	4250280327779
Thermal Design Power	180/130 <sup>1</sup> W
Material	Aluminium, Copper
Weight	482 g
Compatibility	Intel <sup>®</sup> LGA 17XX, 1200, 115X, AMD LGA AM5, PGA AM4
Dimensions	70 x 120 x 146 mm
Speed	600 - 1600 RPM
Bearing	Double Ball Bearing
Rated Voltage	12 VDC
Airflow	75,9 m <sup>3</sup>
Noise	29,4 dB(A)
Lifetime L10	30000 h at 40° C

### Dimensions

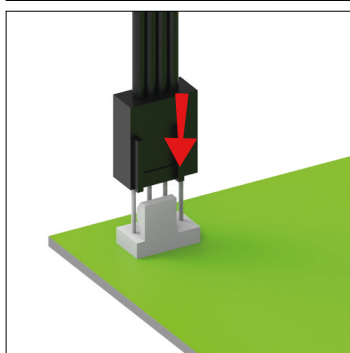
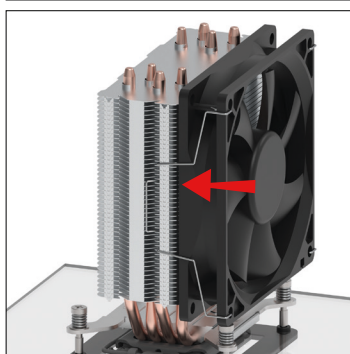
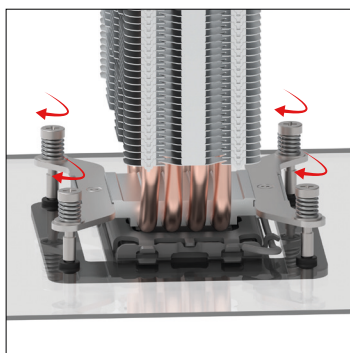
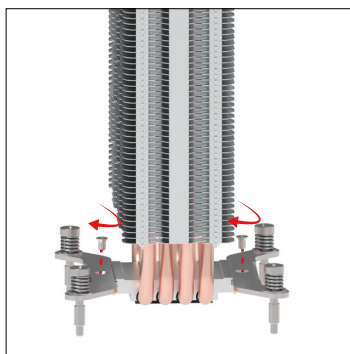
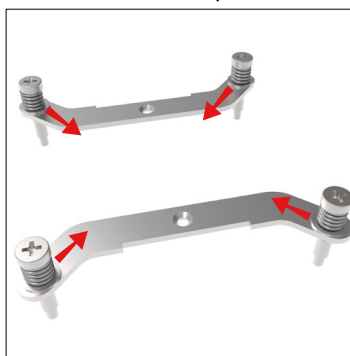


The thermal and mechanical compatibility may vary depending on the system used. All information according to manufacturer specifications. The maximum tightening torque for screw mounting is 1 Nm.  
<sup>1</sup> Only for AMD LGA AM5 processors maximum TDP of 130W; for all other compatible processors TDP 180W. Heatpipes are suggested to be parallel to long side of Intel<sup>®</sup> CPU. Data subject to change (01/23).

## LGA 17XX



## LGA 1200, 115X



## LGA AM5, PGA AM4

